

## Briefing for Health Scrutiny Select Committee – 19 March 2014

### Surrey Better Care Fund Plan

#### What the Better Care Fund is designed to achieve

The Better Care Fund is designed to improve outcomes for vulnerable people through better integrated care and support, and a significant expansion of care in community settings. It will achieve this by shifting resources from acute services into preventative services in primary care, community health and social care.

#### How the Fund will work

The fund is made up of a number of existing elements of funding, most of which will come from health budgets. The announcement covered two financial years:

- For 2014/15, the expected Whole Systems Funding for Surrey = £18.3m. This will be transferred to Surrey County Council with joint investment decisions being made.
- For 2015/16, the Better Care Funding total position for Surrey is expected to be a revenue allocation of £65.5m + capital of £6.0m = £71.5m in total.

Figure 1 – Element of 2015/16 Better Care Fund

	Nationally £m	Surrey £m
New Care Bill duties	135	2.56
Carers breaks	130	2.46
Reablement	300	5.68
Whole systems	1,100	18.30
Balance for allocation	1,795	36.50
	<b>3,460</b>	<b>65.50</b>
Capital general	134	2.30
Disabled Facilities Grant	220	3.70
	<b>354</b>	<b>6.00</b>

In 2015/16 the Better Care Fund will be put into a pooled budget under Section 75<sup>1</sup> joint governance arrangements between Clinical Commissioning Groups (CCGs) and the County Council. Joint work is currently underway to agree the financial governance arrangements which will be put in place to manage the Better Care Fund pooled health and social care budget.

<sup>1</sup> Section 75 of the NHS Act, provides for CCGs and local authorities to pool budgets

One of the main conditions of the Better Care Fund is to 'protect' social care services. 'Protect' is the government's word - we would prefer 'sustain'. In Surrey it has been agreed that plans will be drawn up on the basis that "the system across Surrey has committed to jointly investing the Better Care Fund to improve services and outcomes for patients and to creating financial benefit as a result. We have agreed to share this benefit for further investment in services and to ensure the sustainable delivery of better care for the future. In 2015/16 we expect the benefit to social care to be £25m".

## Engagement

Throughout 2013/14, health and social care providers have been engaged in developing an integrated vision for out of hospital care in each local area through the five Local Transformation Boards. Patients, people who use services and the public have been involved through a number of partnership boards and via local engagement events held during 2013.

Work on the Surrey Better Care Fund Plan began in Autumn 2013. Joint workshops, with Adult Social Care and Clinical Commissioning Group representatives, were held in November, January and February.

Each of the Local Joint Commissioning Groups is developing a local Better Care Fund Plan setting out their joint health and social care work programme. The decision to develop local joint work programmes is designed to enable each area to address the range of different communities in Surrey - from urban to rural, the needs of these specific communities, the different histories, patterns of service provision, service providers, strengths, needs as identified in the Joint Strategic Needs Assessment and challenges - as well as the need for local ownership and leadership.

Joint work, which is being co-ordinated by Public Health, is also underway to define targets for the six Better Care Fund metrics and financial benefit targets.

## Governance

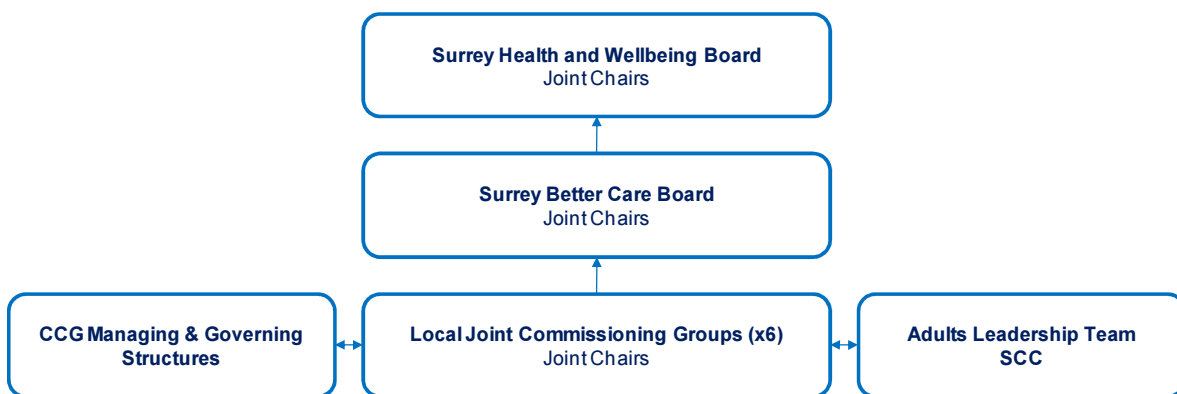
The governance arrangements in place for oversight and governance of progress and outcomes are as follows:

- There will be six Local Joint Commissioning Groups in Surrey – one for each of the six local CCG areas - with membership drawn from Adult Social Care, the CCG and other local stakeholders, including district and borough councils, patient/service user and carer representatives.
- The Local Joint Commissioning Groups will be responsible for all Better Care Fund investment decisions. These investment decisions will be made jointly by health and social care partners at a local level.
- The Local Joint Commissioning Groups will be responsible for overseeing the operational delivery of the schemes set out in their local joint work programme and for delivering the radical transformation needed in their local area to provide better care in the future.

- The Surrey Better Care Board will provide strategic leadership across the Surrey health and social care system and hold the Local Joint Commissioning Groups to account for how they invest the Better Care Fund and the progress and outcomes they deliver. Membership will be drawn from Adult Social Care and the Clinical Commissioning Groups with a joint chair arrangement.
- Surrey’s Health and Wellbeing Board will continue to set the overarching strategy across the Surrey health and social care system.

There will be clear financial governance arrangements agreed and put in place for the management of the Better Care Fund pooled health and social care budget.

Figure 2 – Governance arrangements for the Better Care Fund



### The Surrey Better Care Fund Plan

The Surrey-wide Better Care Fund Plan is a composite Surrey-wide plan. It provides an overview of key themes from each of the six local joint work programmes and gives examples of how the enhanced and integrated model of community based health and social care in Surrey will deliver better outcomes and experiences for the population. The three key themes in the plan are:

1. Enabling people to stay well: Maximising independence and wellbeing through transformed prevention and early intervention for people at risk of being unable to manage their physical health, mental health and social care needs.
2. Enabling people to stay at home: Integrated care delivered seven days a week through enhanced primary and community services which are safe and effective and increase public confidence to remain out of hospital or residential/nursing care.
3. Enabling people to return home sooner from hospital: Excellent hospital care and post-hospital support for people with acute, specialist or complex needs supported by a proactive discharge system which enables a prompt return home.

## Timeline

The LGA and NHS England's guidance on the Better Care Fund sets out the expectation that the plan will be agreed between the County Council and Surrey's Clinical Commissioning Groups and be signed off by the Health and Wellbeing Board.

The Surrey Health and Wellbeing Board signed-off the 'draft' Surrey-wide Better Care Fund plan and submitted it to NHS England by the 14 February 2014 deadline. The 'final' Surrey-wide Better Care Fund plan is due to be submitted as part of the overall NHS planning round by 4 April 2014.

## Report author and contact details

Julia Ross, Chief Executive, NHS North West Surrey CCG  
Tel 01372 201536                      [julia.ross@nwsurreyccg.nhs.uk](mailto:julia.ross@nwsurreyccg.nhs.uk)

Susie Kemp, Assistant Chief Executive, Surrey County Council  
Tel: 020 8541 7043                      [susie.kemp@surreycc.gov.uk](mailto:susie.kemp@surreycc.gov.uk)

Dave Sargeant, Interim Strategic Director, Adult Social Care, Surrey County Council  
Tel: 01483 518441                      [david.sargeant@surreycc.gov.uk](mailto:david.sargeant@surreycc.gov.uk)

END